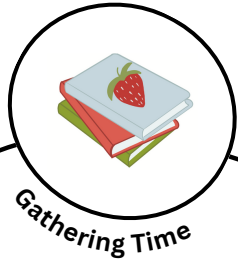


Plants We Eat: *Parts of a Plant*

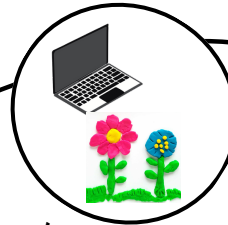
Event Guide



Gathering Time



Movement & Music

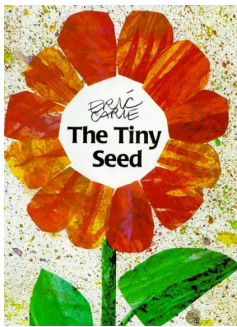
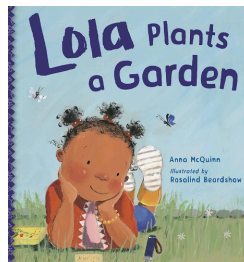
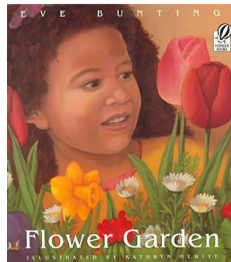
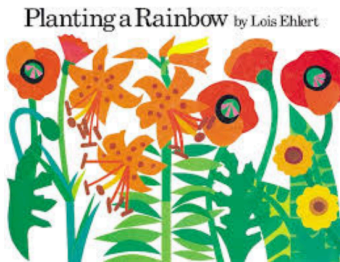


Watch & Play



Explore the Room

Let's Read



Read -Aloud Options (TSG 18a)

- Planting a Rainbow, By: Lois Elhert*
- The Tiny Seed, By: Eric Carle*
- Lola Plants a Garden, By: Anna McQuinn*
- Flower Garden, By: Eve Bunting*

Early Literacy Skill

Blending Words (TSG- 15c)

Tap the top of your arm for the beginning of each word.



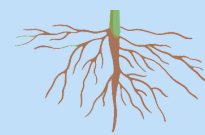
S-EE-D



S-T-E-E-M



L-EA-F



R-OO-T



P-E-T-A-L

Outdoor Plant Hunt

(TSG- 13)

Provide a ziplock bag. Head outside to gather a variety of plants. Encourage families to help their little ones identify the roots, stem and leaves of their plants. Then, sort the, by type or sizes.

Send them home to create a nature collage of plants!

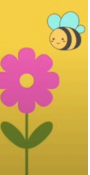


Lets Move!

Click the image for the link.

ROOTS, STEM, LEAVES, FLOWER

Parts of a Plant Song



Explore the Room

Create each station for families to engage in a variety of activities together!

Copy this page and cut to separate each section to place instructions at each station.

Station #1: Toss & Collect Math Game (TSG- 6, 20a, 20b)

- Point to the large number cards or floor mats and say each number. Locate the bean bags, a bin of “seeds”, and small cups or bowls. Take turns tossing a bean bag onto a number card. Then, count & collect that many “seeds” to place into your cup. Play until you have filled a cup!

***Designate something as seeds (glass beads, pom-poms, square counters)*

Materials: bean bags, large number cards, small items for seeds, small cups or bowls for gathering their seeds



Station #2: Flower Art (TSG- 7)

- Use the provided materials to create a unique flower. While assembling, remember to state the names of the parts of the plant: stem, leaves, and petals. Use markers to label the parts of their flower if you'd like.

**See the image on the right as a sample for your flower.*

Materials: Paper plates or circles of white paper, colorful paper strips or tissue paper, scissors, glue, bingo daubers, markers



(Credit: Toddler Approved)

Station #3: Culture Clip & Dough Plants (TSG- 7, 11a)

- Explore the variety of colors of play-dough & dough tools. Roll, squish, & play to create different types of plants and flowers. Use the tools to give your plants textures. Discuss the different parts of your plants, as mentioned in the clip.



Use the QR code:

- Option 1- Set up an ipad near sensory bin station.
- Option 2- Families can scan the QR code and watch from their device.



Materials: Play dough and playdough tools.

**Place this card with your math game.*

How to Play

- Toss a bean bag onto a number.
- Collect the same number of berries and place into your cup.
- Toss again & collect more until you fill your cup!



**Place this card near your sensory table.*

Watch Clip & Play

- Scan the QR code.
- Explore the play-dough materials while watching the video.

